

The Plaza – Day and Respite Care Community



Rendition of the Plaza building Senior Community Center for the Linberg and Simmons renovation plans.

THE PLAZA

The annex to the Leopards Club will be restored to a beautiful building to assist families caring for their elders. It has an accessible central location with existing zoning which will support this purpose. The Plaza will be a beautiful and useful building for the community.

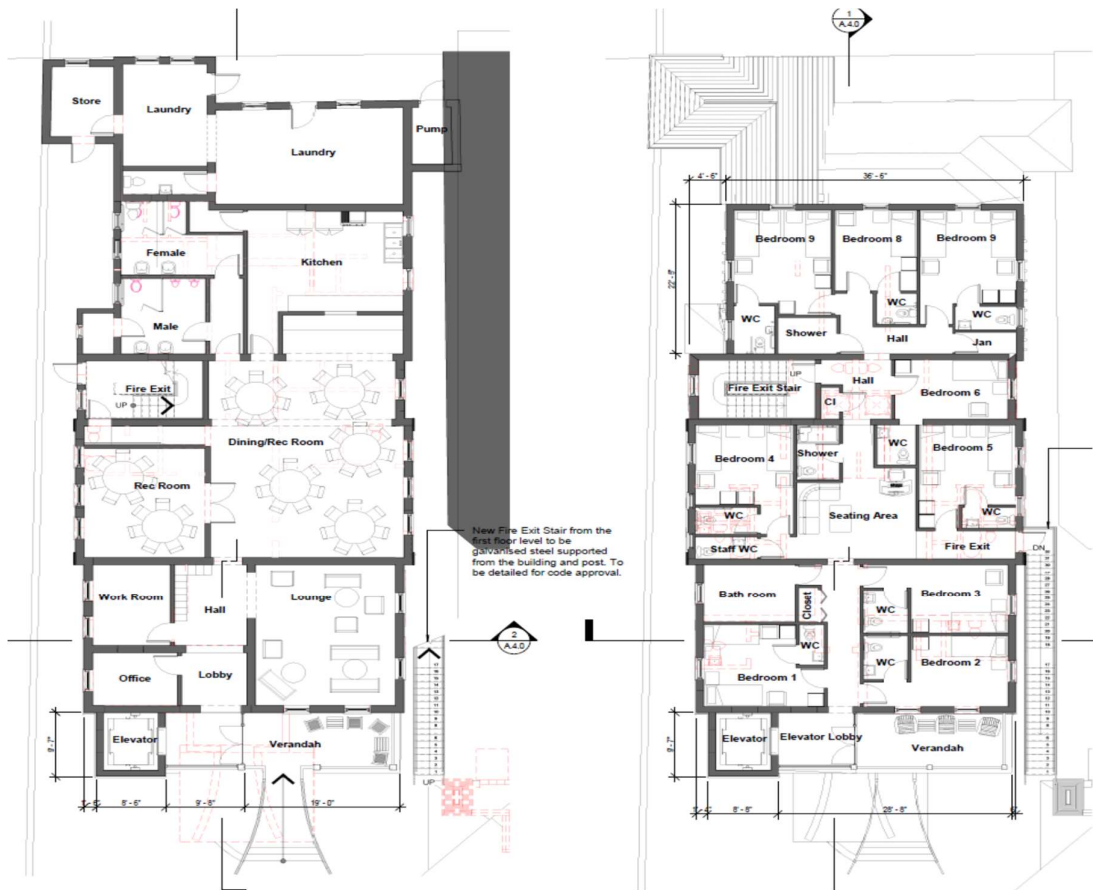
It will utilize three floors, including the basement where specialized senior services can be located, such as a rehabilitation unit from which a variety of nurses and doctors can schedule appointments, as well as a salon for personal grooming. The combination of care will offer a one-stop location for families providing care. Rates will be a modest target \$90 per day with 2 meals and \$295 a day for respite care with 3 meals and 24 hour RN coverage.

Meeting Seniors' Concerns

Daycare and respite care is critical to provide support for the families providing care to their elders, which will help them reduce their stress. Many family members are not equipped to care for seniors and for aging parents. With seniors living longer, the burden of care will fall on families many whom have children in school, straining their ability to provide quality care. The Plaza has recently received Planning Approval.

***The target is to raise \$100,000 by early 2022,
to complete MEP, construction permit, and legal transfers.***

THE PLAZA Senior Activity and Respite Care



Plaza renovated plans for the senior community center and respite floors.

The Leopards Club retains ownership after transfer to a Limited by Guarantee company as equity contribution.

The Plaza Senior Care

Development Proforma

Description	Square Feet	Price per	Total Cost
Care Floors			
First Floor	2,898	\$300	869,400
Ground Flr	2,969	\$300	890,700
Basement	943	\$300	282,900
Grs Major sf	6,810	\$300	\$ 2,043,000
External Space			
FFI Verandah	277	\$100	27,700
GF Verandah	260	\$100	26,000
Roof Floor	1,036	\$100	103,600
Grs External	1,573	\$100	\$ 157,300
Other Expenses			
Development/Proj Mgt			250,000
Elevator and equipment			300,000
Respite bedsets 17		\$5,000	85,000
Furniture and fixtures			175,000
Total Estimated Development Costs	8,383		\$ 3,010,300

Proforma budget for construction and furnishing of The Plaza.